

120MHz 26dB Gain CATV Reverse Integrated Circuit

★ FEATURES

- Excellent linearity
- Excellent distortion performance
- High gain
- Extremely low noise
- Excellent return loss properties

★ APPLICATIONS

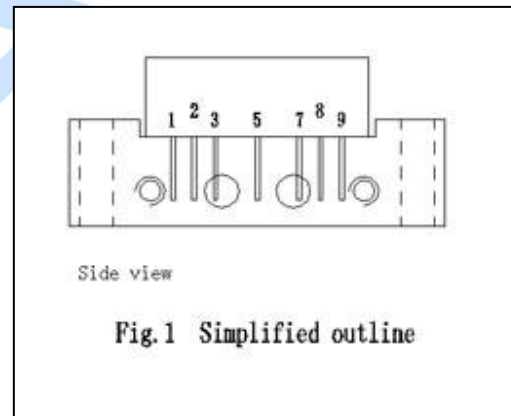
For CATV systems operating over a frequency range of 5 to 120MHz.

PINNING — SOT115J

PIN	DESCRIPTION
1	Input
2	Common
3	Common
5	+VB
7	Common
8	Common
9	Output

★ DESCRIPTION

KR66BC in a SOT115J package, operating at a supply voltage of 24V(DC), Reverse amplifier in two-way CATV systems.



★ QUICK REFERENCE DATA

SYMBOL	PARAMETER	CONDITIONS	MIN	TYP	MAX	UNIT
G _p	power gain	f=5MHz	25.5	26.0	27.0	dB
		f=120MHz	25.5	-	-	dB
I _{tot}	total current consumption (DC)	VB= +24V	110	120	135	mA

120MHz 26dB Gain CATV Reverse Integrated Circuit

★ LIMITING VALUES

In accordance with the Absolute Maximum Rating System (IEC 134).

SYMBOL	PARAMETER	MIN.	MAX.	UNIT
VB	supply voltage	-	25	V
V _i	RF input voltage	-	55	dBmV
T _{stg}	storage temperature	-20	+100	°C
T _{mb}	operating mounting base temperature	-40	+100	°C

★ CHARACTERISTICS

Bandwidth 5 to 120MHz; VB = +24 V; T_{mb} = 25 °C; Z_S = Z_L = 75 Ω .

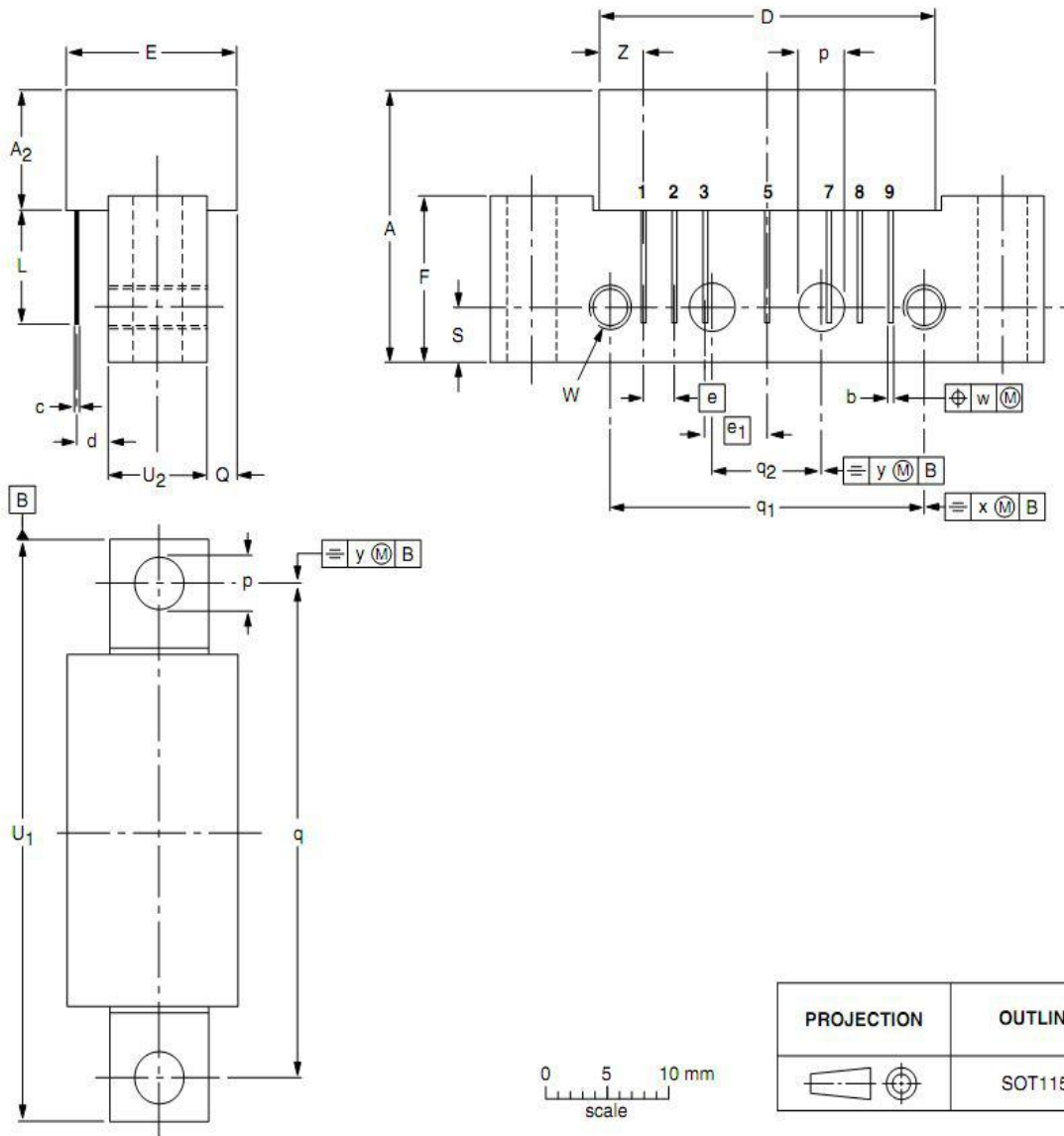
SYMBOL	PARAMETER	CONDITIONS	MIN	Typ	MAX	UNIT
G _p	power gain	f=5MHz	25.5	26.0	27.0	dB
SL	slope cable equivalent	f=5 to 120MHz	0	0.5	1.0	dB
FL	flatness of frequency response	f=5 to 120MHz	-	-	±0.3	dB
S ₁₁	input return losses	f=5 to 120MHz	16	-	-	dB
S ₂₂	output return losses	f=5 to 120MHz	16	-	-	dB
CTB	composite triple beat	4channels Flat output level across the band. Vo=50dBmV at 77.25 MHz,	-	-66	-	dB
CSO	composite second order distortion		-	-70	-	dB
X _{mod}	cross modulation		-	-65	-	dB
F	noise figure	f=120MHz	-	-	6.0	dB
I _{tot}	total current consumption (DC)	VB=+24V	110	120	135	mA

120MHz 26dB Gain CATV Reverse Integrated Circuit

★ PACKAGE OUTLINE

Rectangular single-ended package; aluminium flange; 2 vertical mounting holes;
2 x 6-32 UNC and 2 extra horizontal mounting holes; 7 gold-plated in-line leads

SOT115J



DIMENSIONS (mm are the original dimensions)

UNIT	A max.	A ₂ max.	b	c	D max.	d max.	E max.	e	e ₁	F	L min.	p	Q max.	q	q ₁	q ₂	S	U ₁	U ₂	W	w	x	y	Z max.
mm	20.8	9.1	0.51 0.38	0.25	27.2	2.54	13.75	2.54	5.08	12.7	8.8	4.15 3.85	2.4	38.1	25.4	10.2	4.2	44.75 44.25	8.2 7.8	6-32 UNC	0.25	0.7	0.1	3.8

UNIT: mm